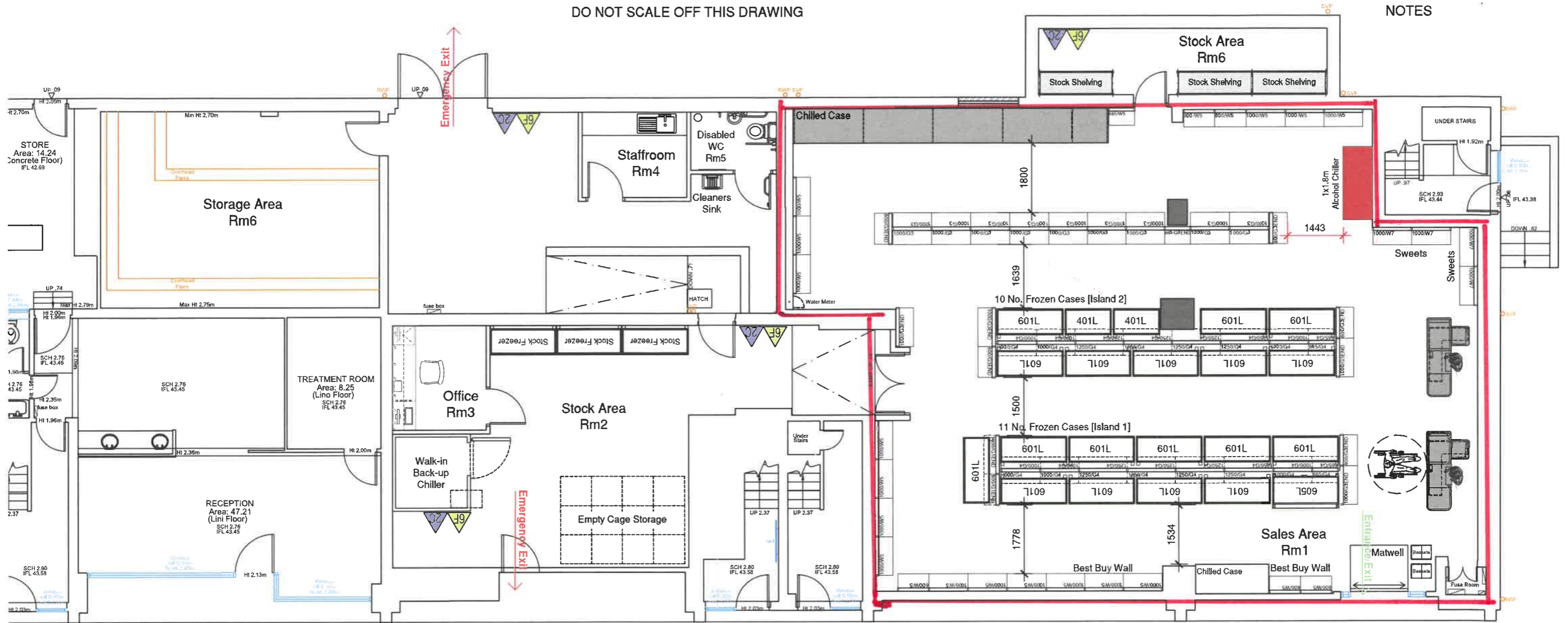


DO NOT SCALE OFF THIS DRAWING

NOTES



| Fire Extinguishers | |
|--------------------|-----------|
| | 6Ltr Foam |
| | 2Ltr Co2 |

Total Nett Sales Area = 2064ft²

Note:
All setting-out dimensions are given from finished face of perimeter wall paneling.



Project
CHILWELL STORE
 46-48 Blenheim Drive
 Beeston
 Nottingham NG9 5ES

Title
GENERAL ARRANGEMENT
 Block Plan

Scale **1:100@A3** Date **12.05.21**
 Drawn **PS** Checked

Drawing Number
7690-A-2101 D

Heron Foods Limited
 Jackson Way
 Melton
 East Yorkshire
 HU14 3HJ
 t. 0345 603 7300
 f. 01482 632520

This drawing is the copyright of Heron Foods Limited. It cannot be reproduced without permission.